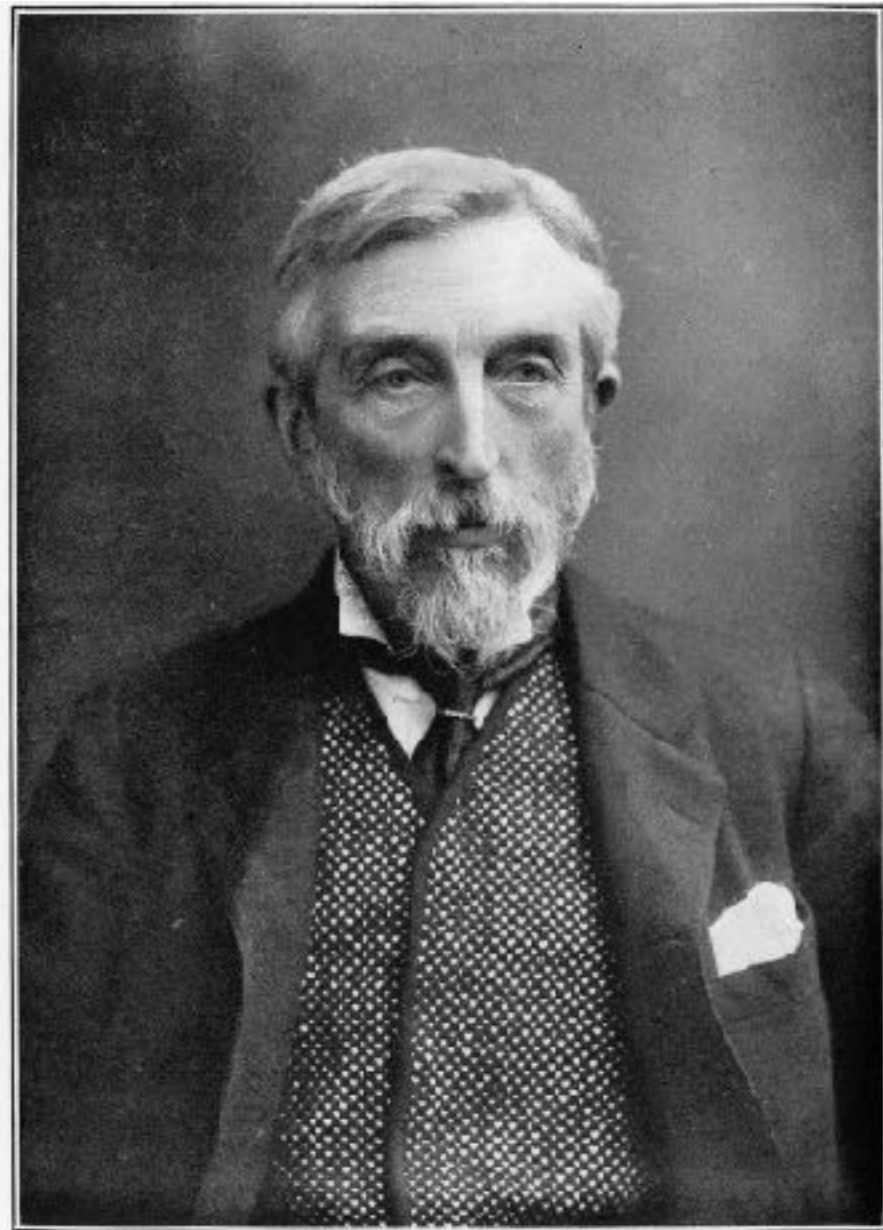


# Городские данные

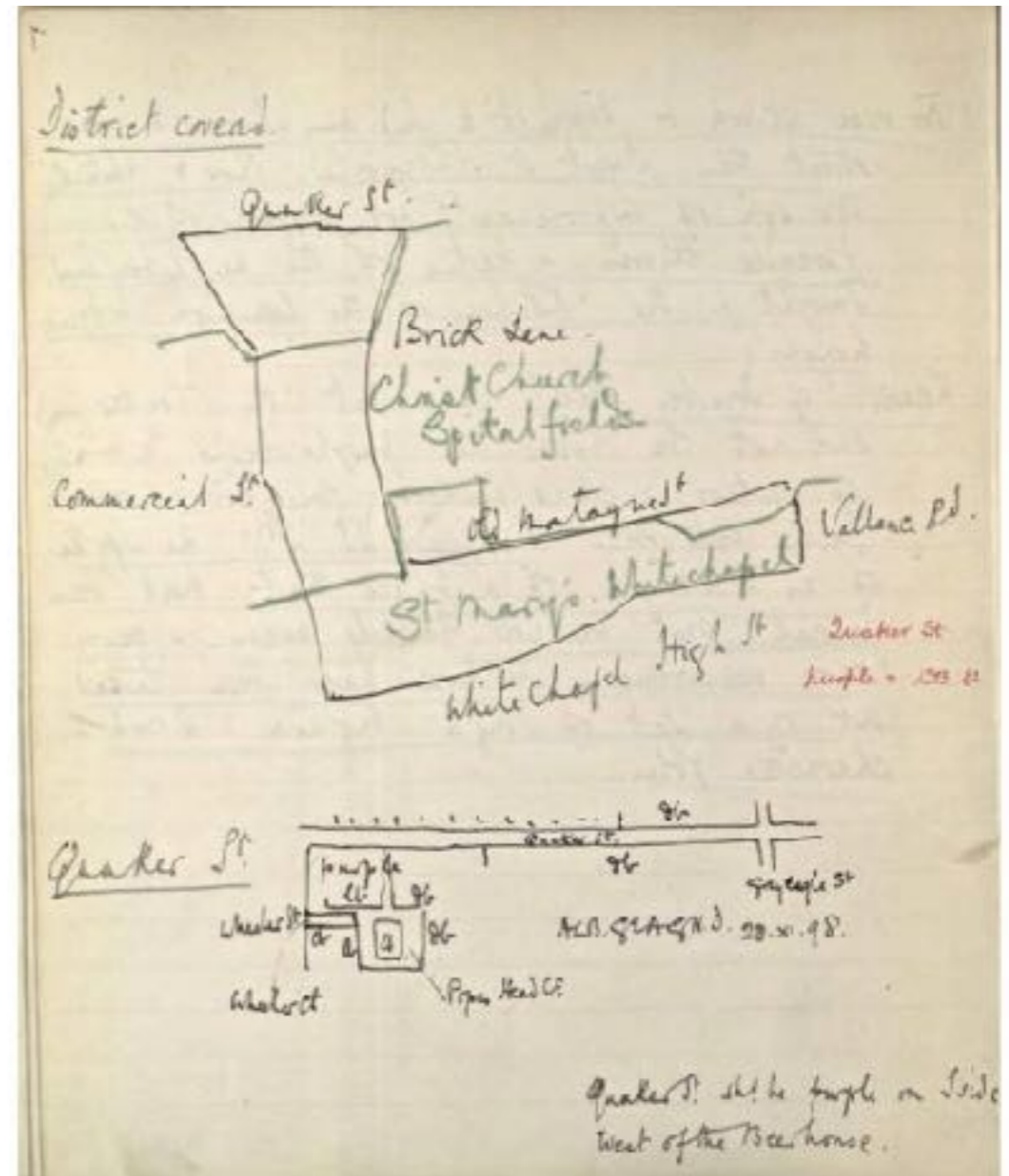
Спецкурс

Вадим Кохтев  
КВ Strelka

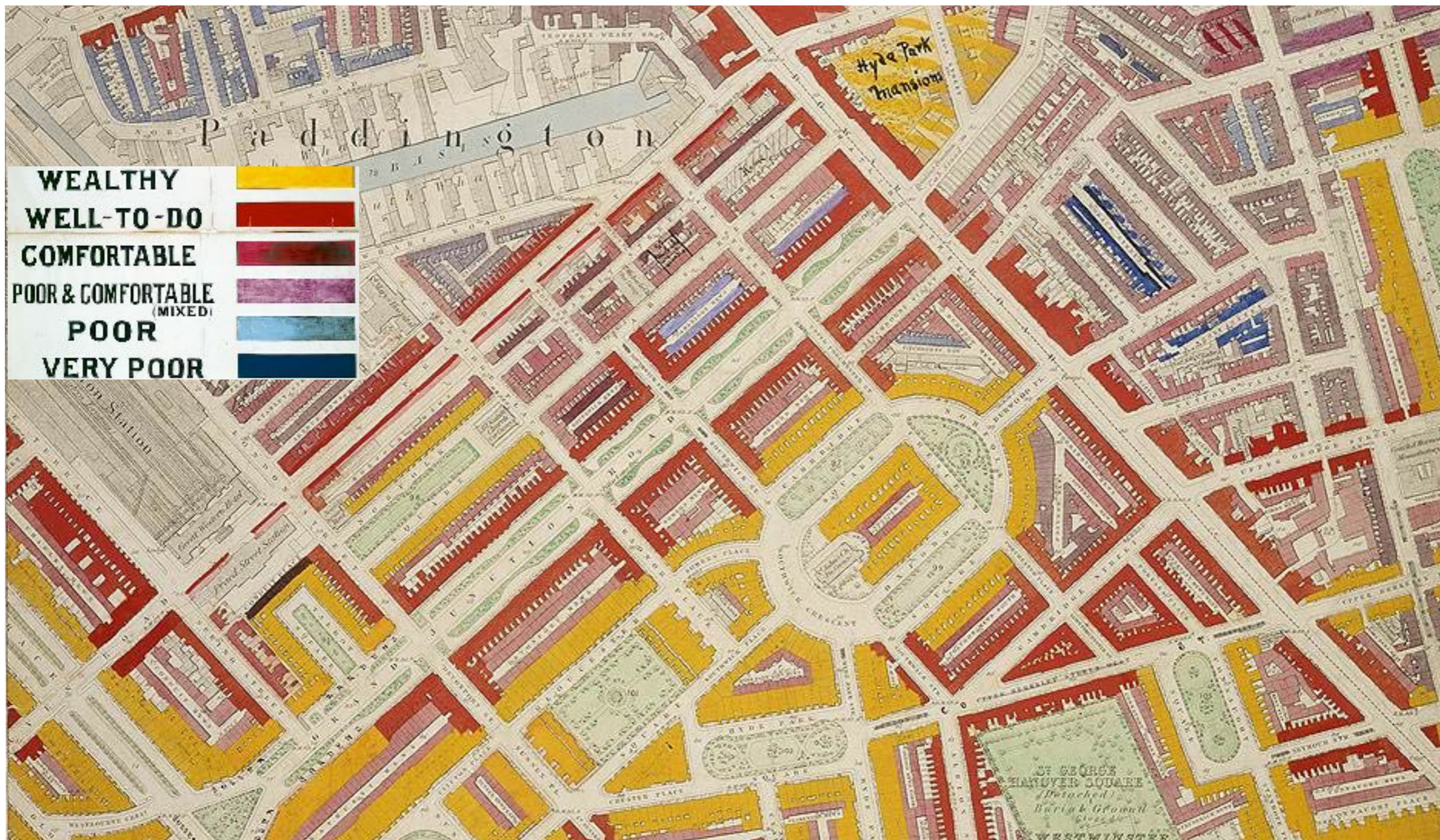
# С кого всё началось?



Чарльз Бут

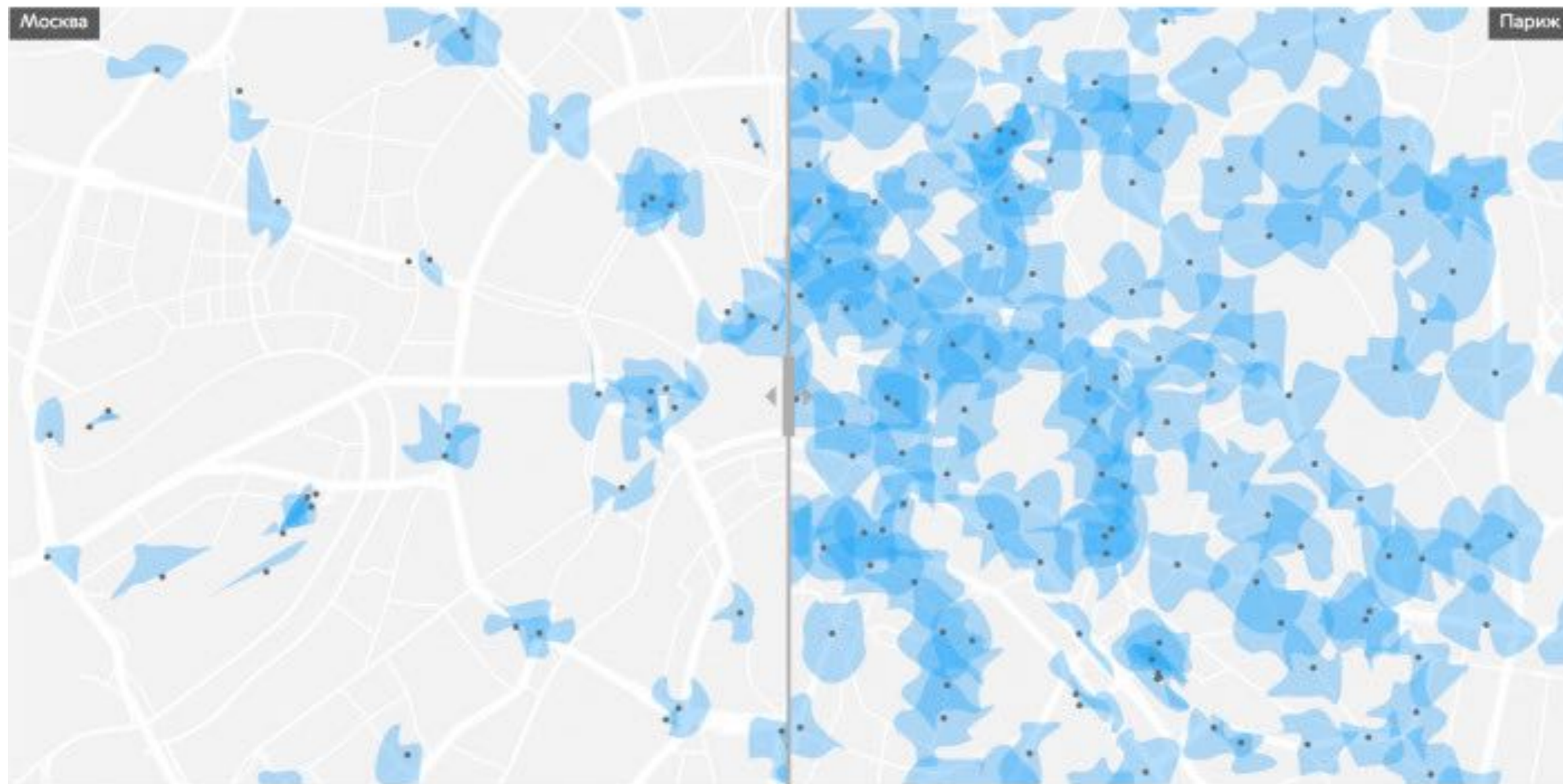


Пример записей



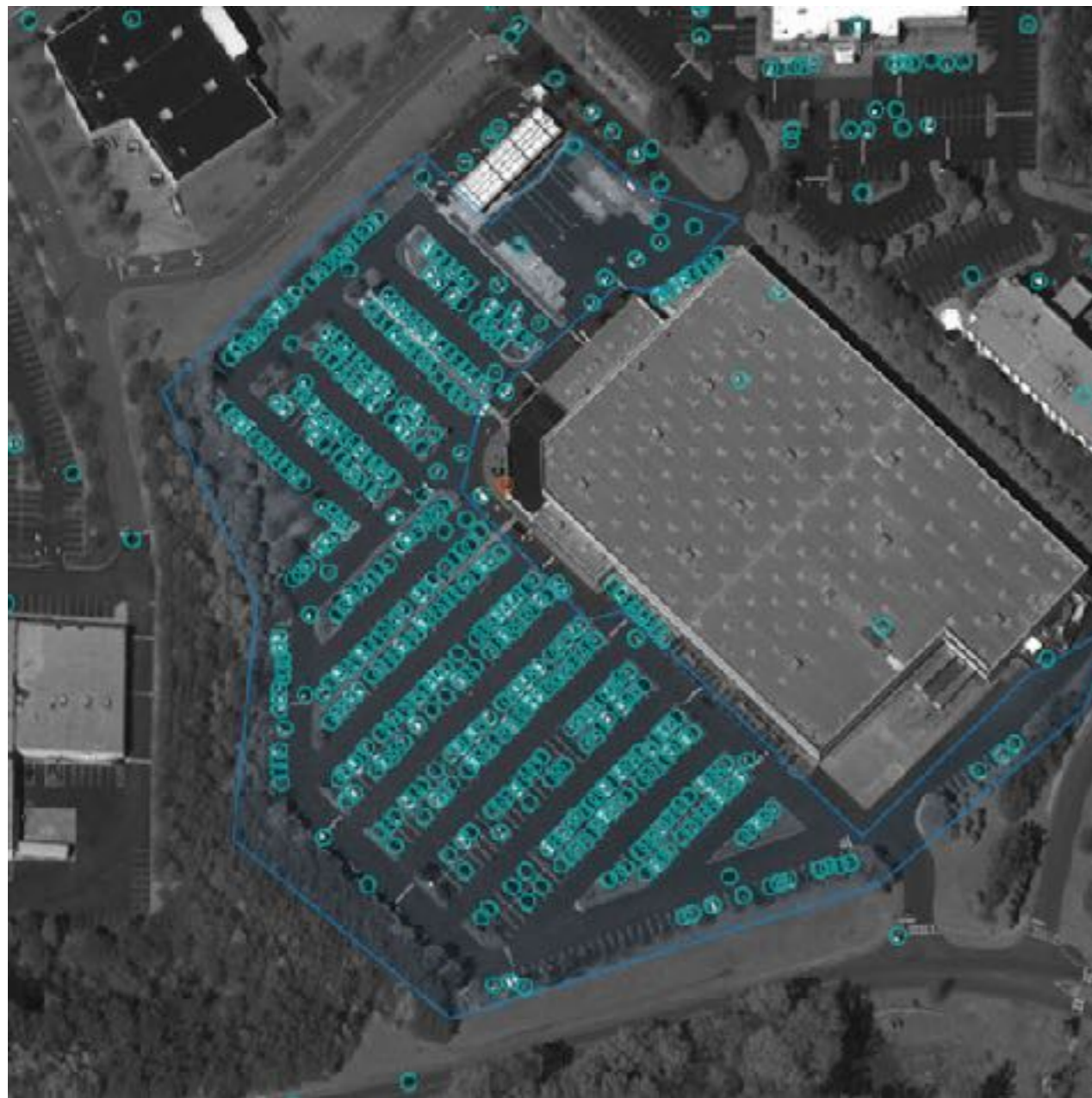
Часть карты бедности

# Изохроны

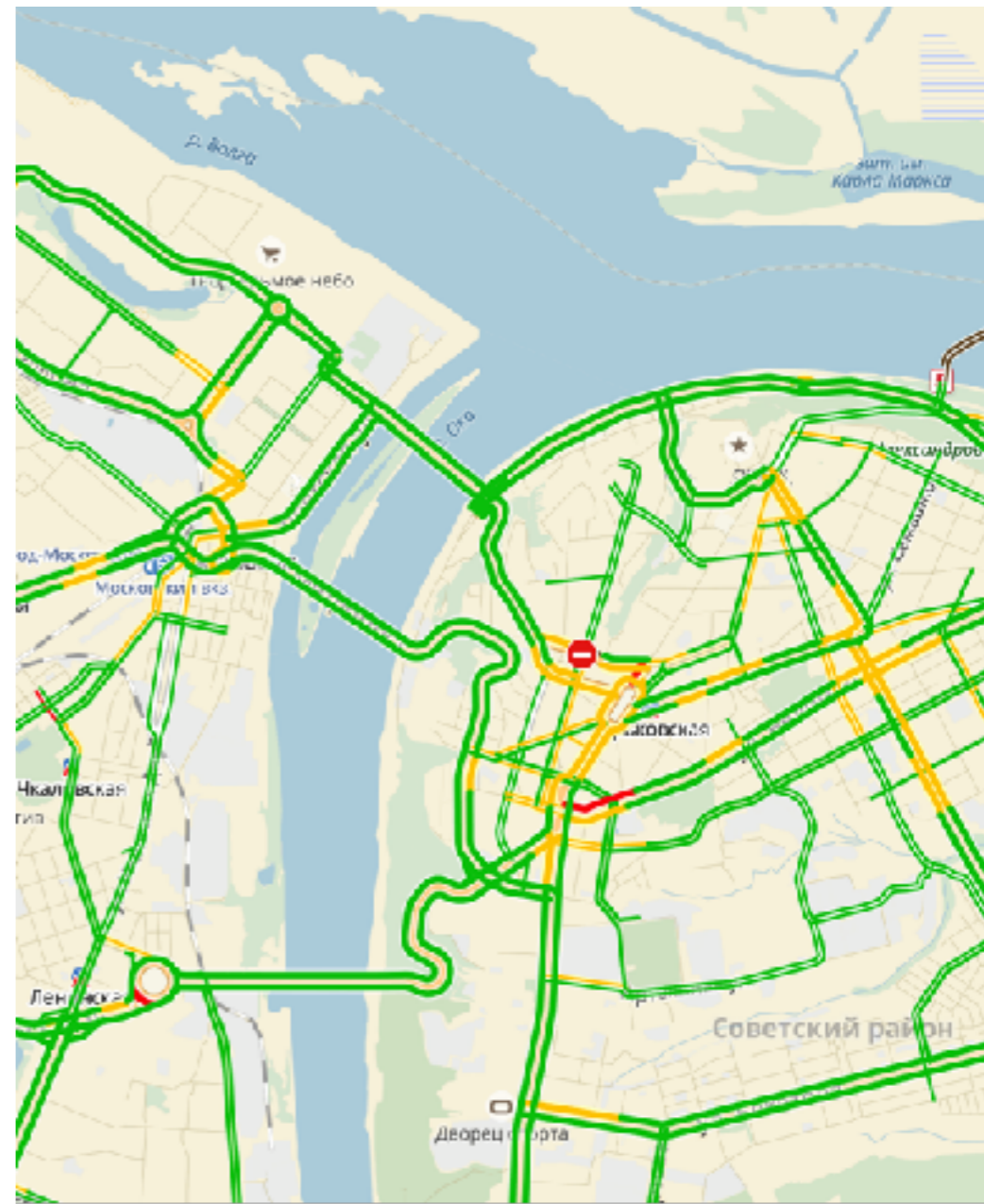


**Доступность за 5 минут**

# Транспортные потоки

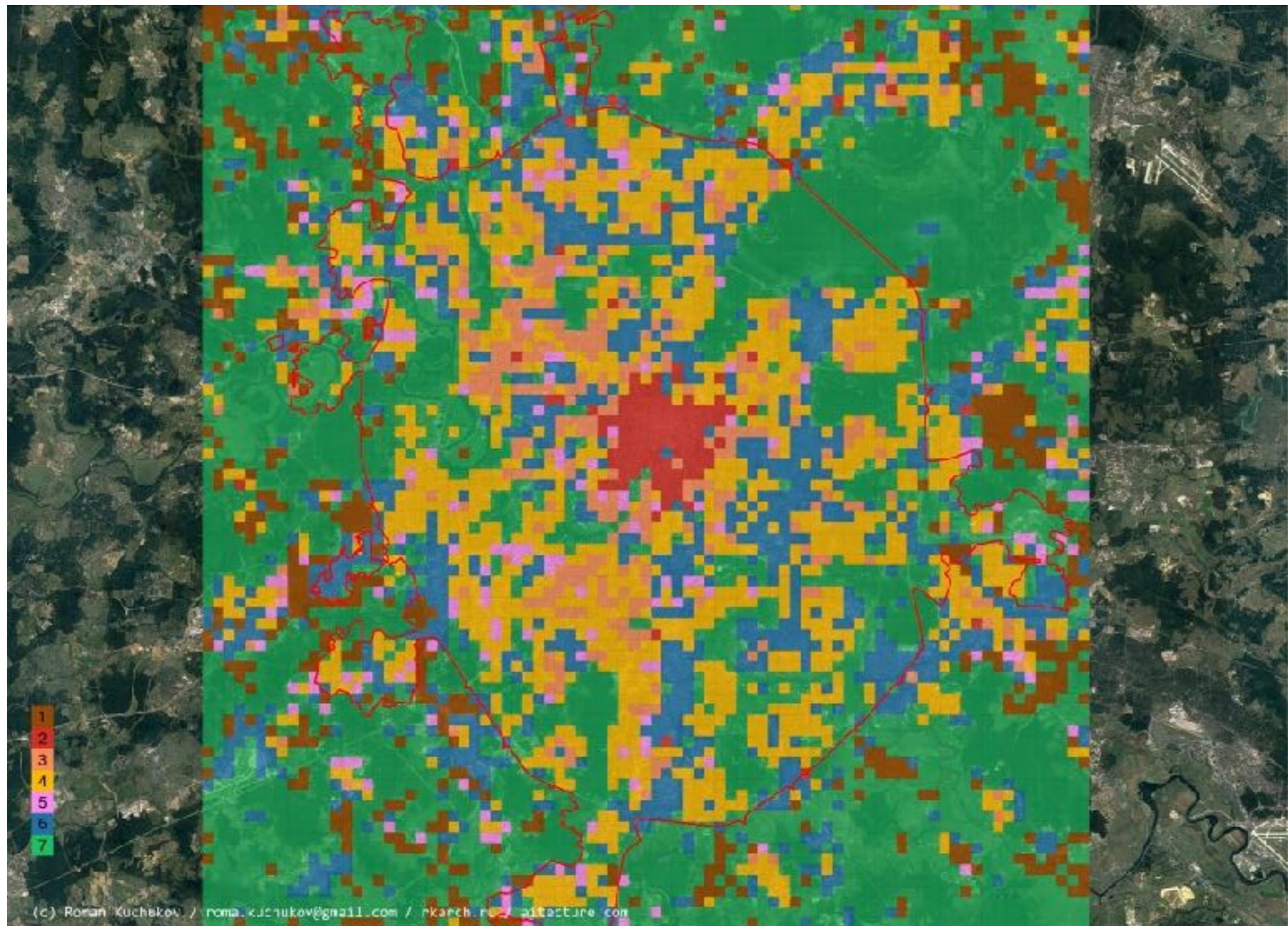


Нагрузка на сеть рядом с ТЦ



Яндекс.Пробки

# Распознавание типа застройки



# Распознавание лиц

LEARN MORE

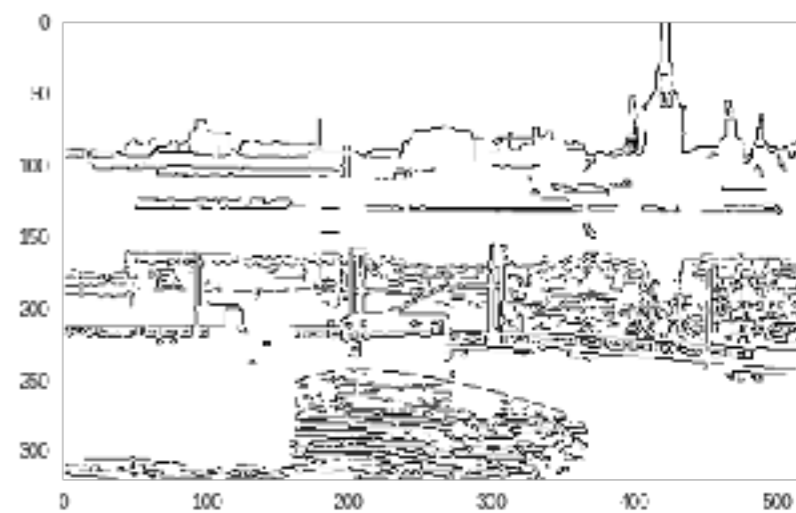
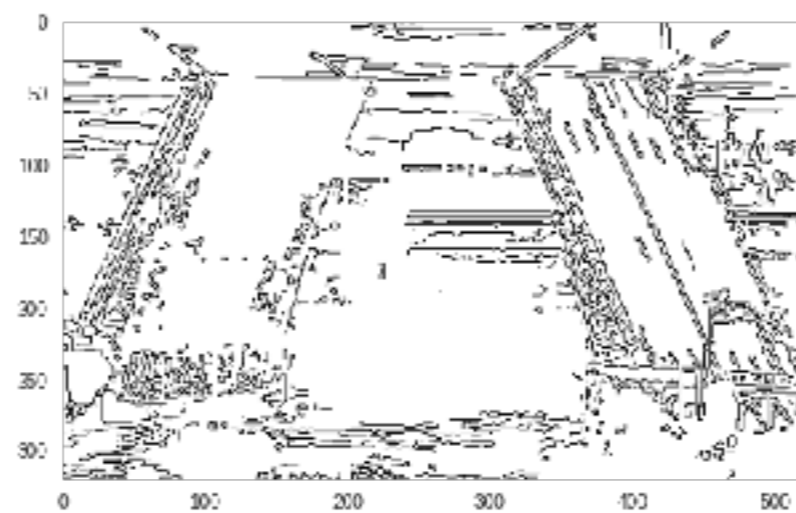
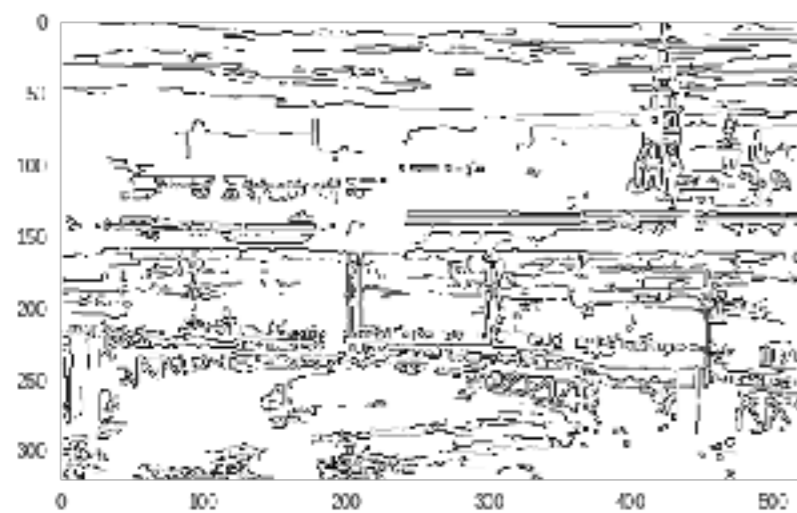


Pictures are taken during the passengers' boarding and stored in Max Face

# Развод мостов



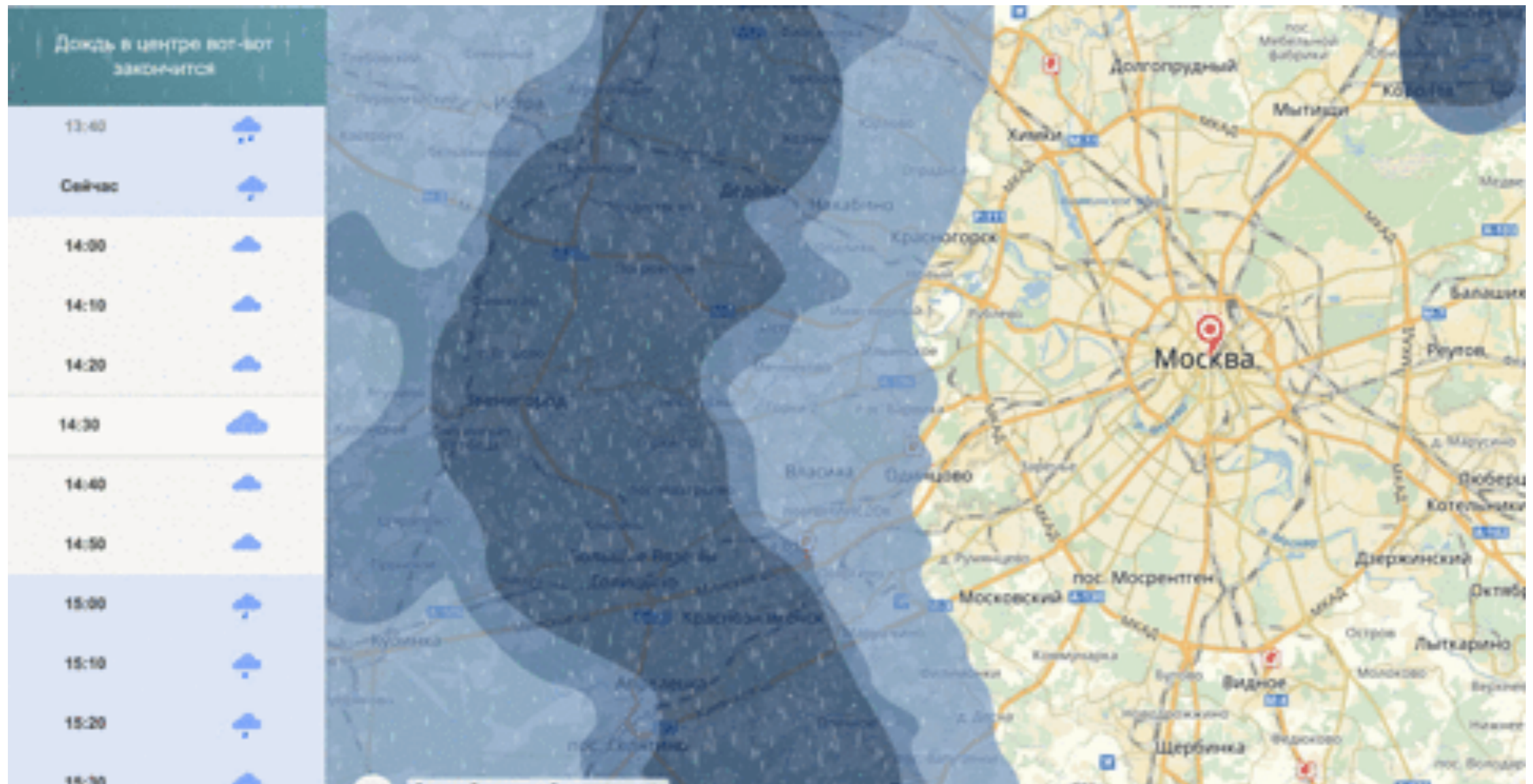
## Видеоряд



## Распознаваемые изображения

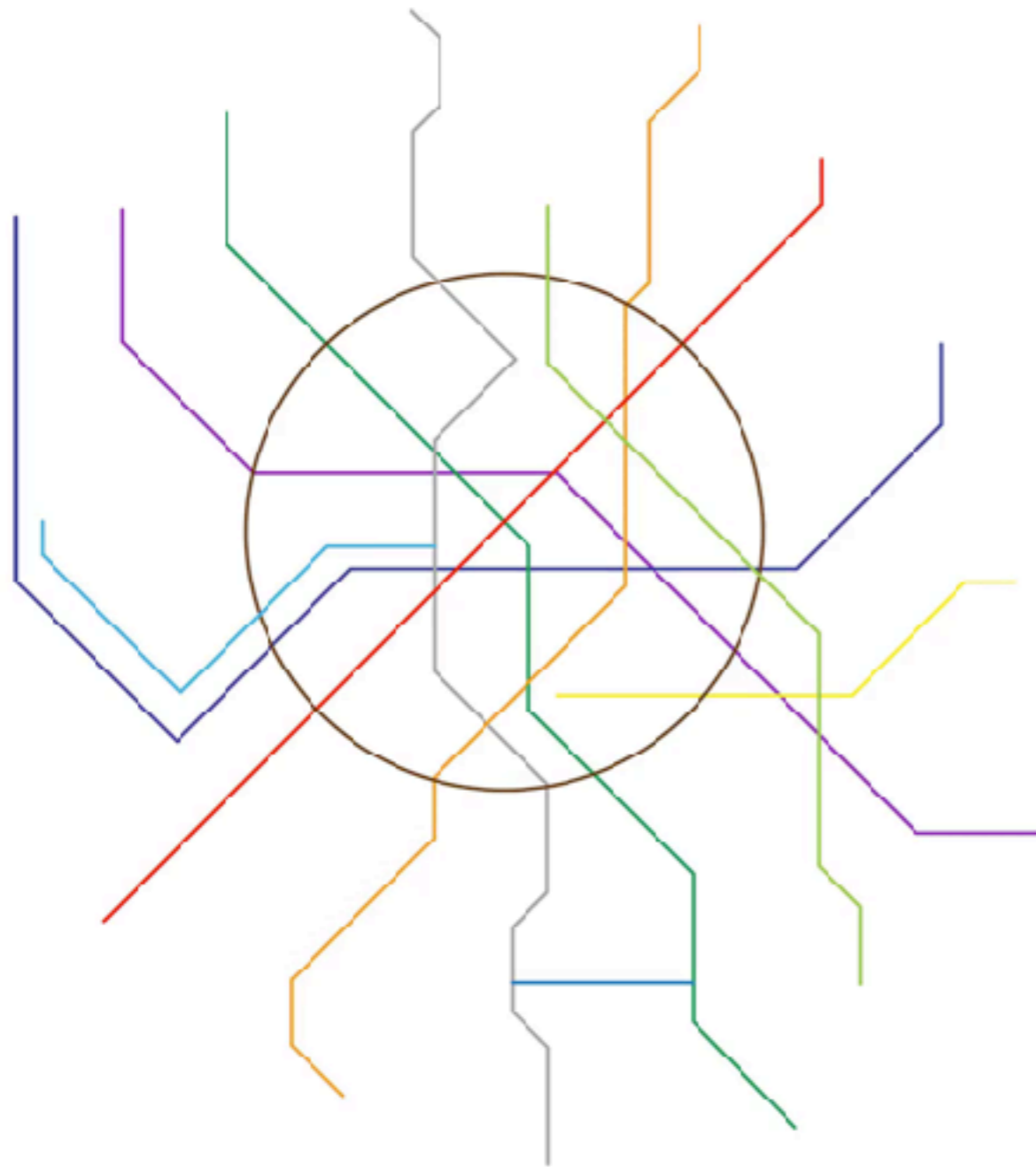


# Погода

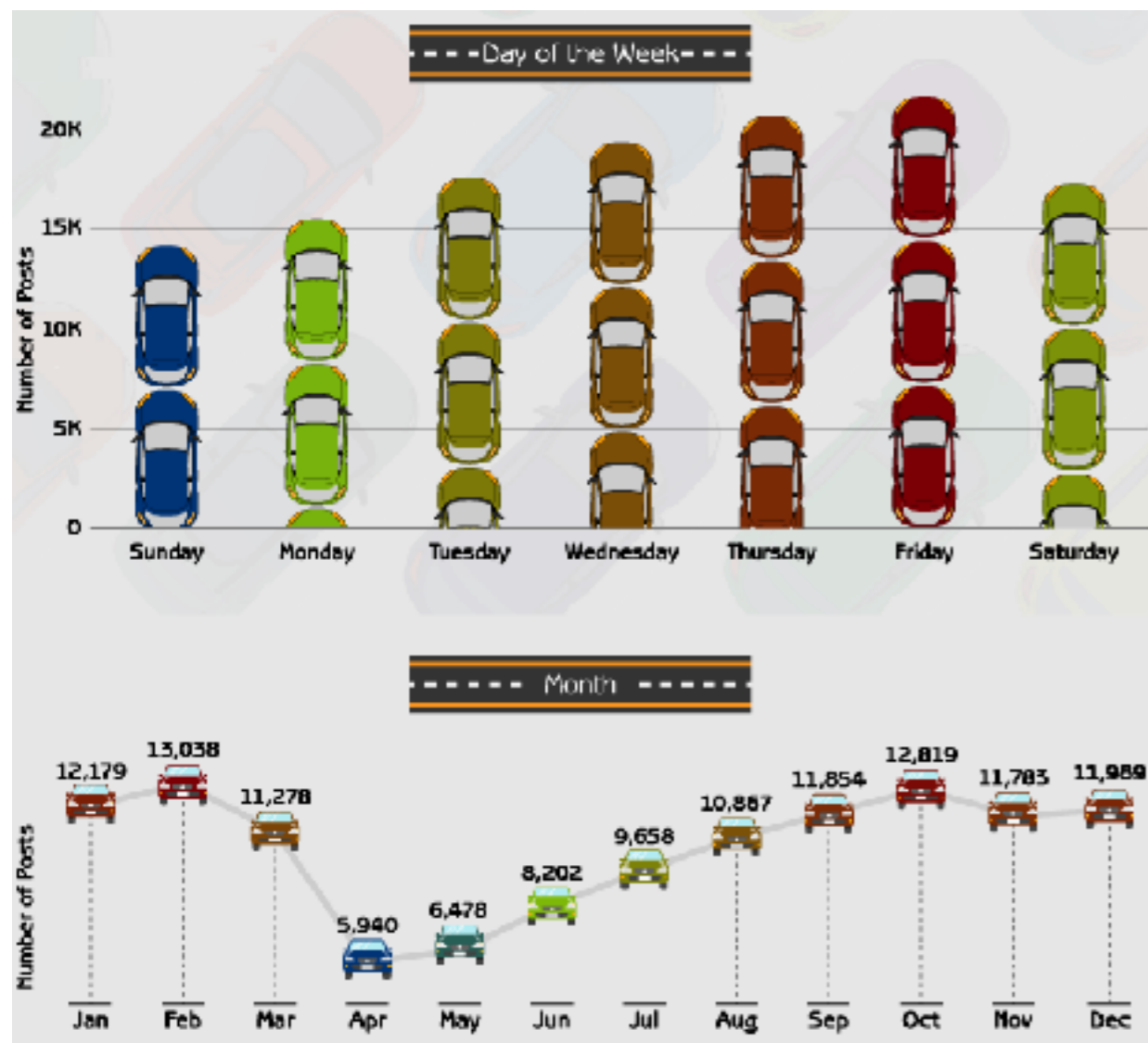


**Тот самый июньский дождь**

# Не всегда полезно



# Данные соцсетей



Оценка пробок через посты



Анализ фотографий ВК

# Chronotope City

Moscow

How to use

A study of time use in Moscow

24

0

Retail trade

Financial services

Representative offices

Legal services

Tourism

Public catering

Media

Leisure and recreation

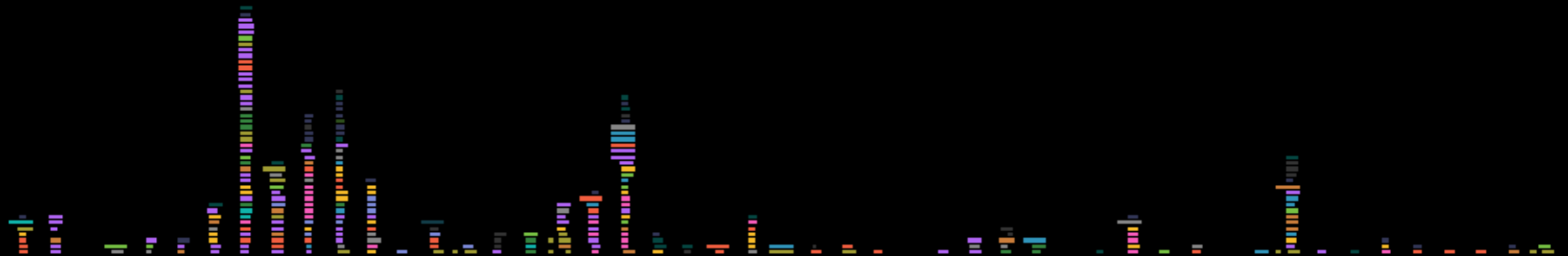
Public services

Household services

Healthcare

Other

Functions

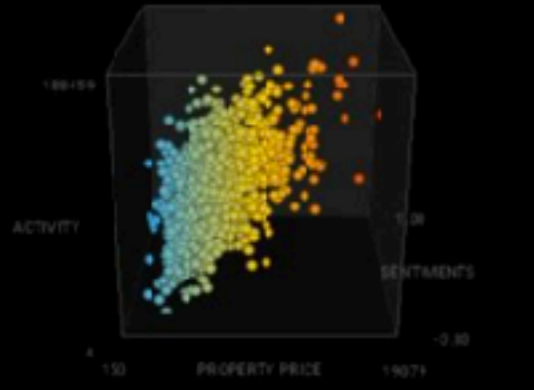


# Value of Satisfaction: London

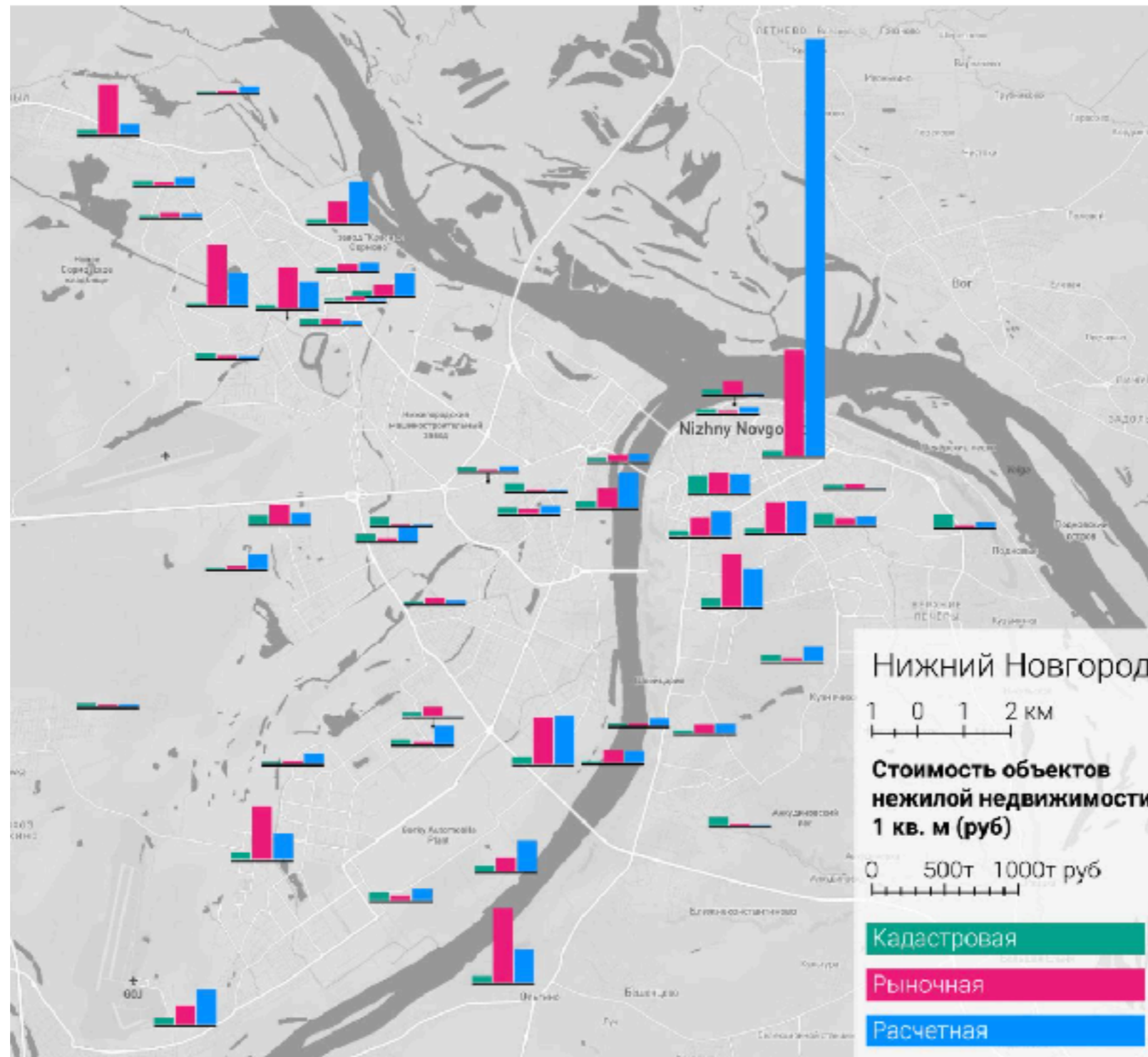
The influence of people's activity on real estate market

Many global cities are facing near-exponential rise in house prices. Property bubbles, gentrification leading to unaffordability are constantly in the spotlight. Cities like London, Hong Kong or Dubai are transformed into real estate investment destinations. This process is assumed to cause public dissatisfaction as locals cannot afford their own city.

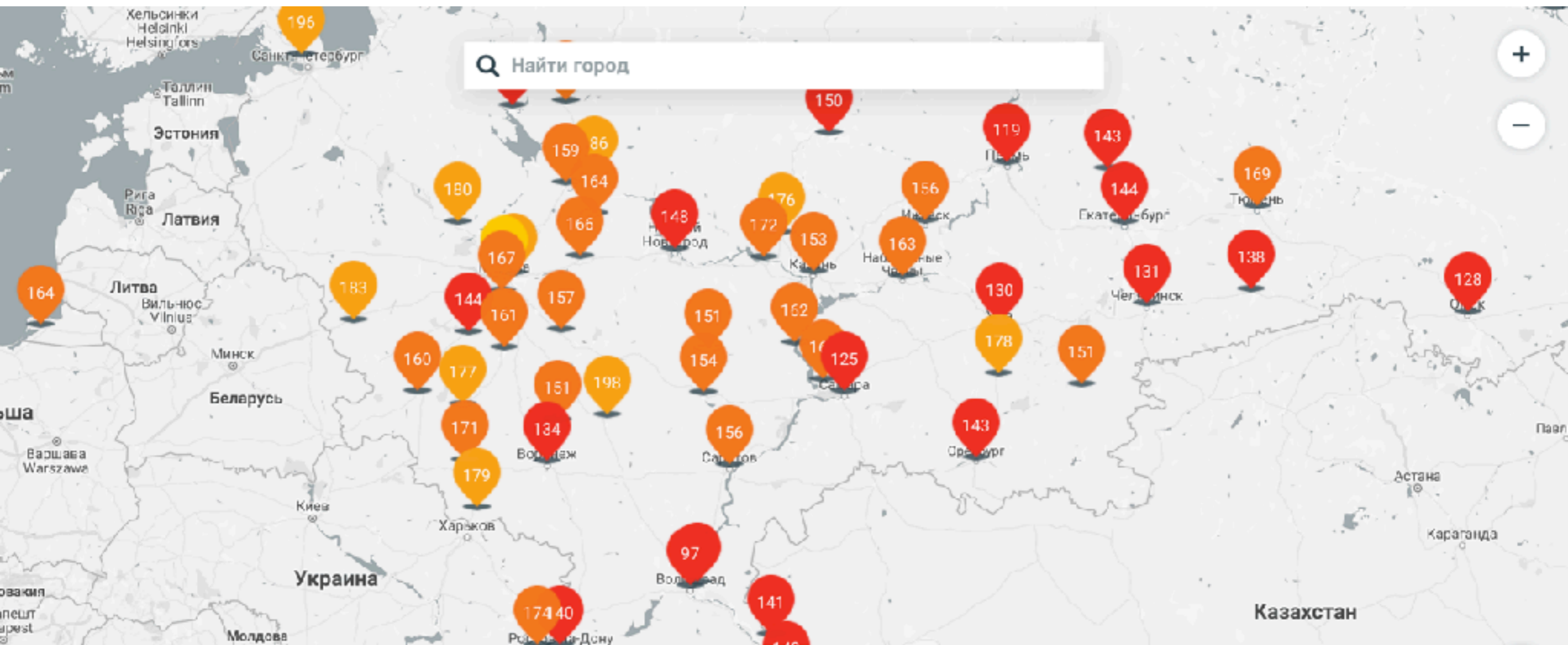
Habitatum challenges this stereotype by comparing 3 metrics: activity density, people's sentiments and residential real estate prices in London. We divide the city into areas with equal population to examine whether additional activity affects property prices and whether overpriced areas are perceived in a bad way.



# Альтернатива статистике



# Индекс качества среды



Состояние городской среды

● Плохое  
0 - 150

● Удовлетворительное  
151 - 200

● Хорошее  
201 - 250

● Исключительное  
251 - 300



**Спасибо за внимание!**